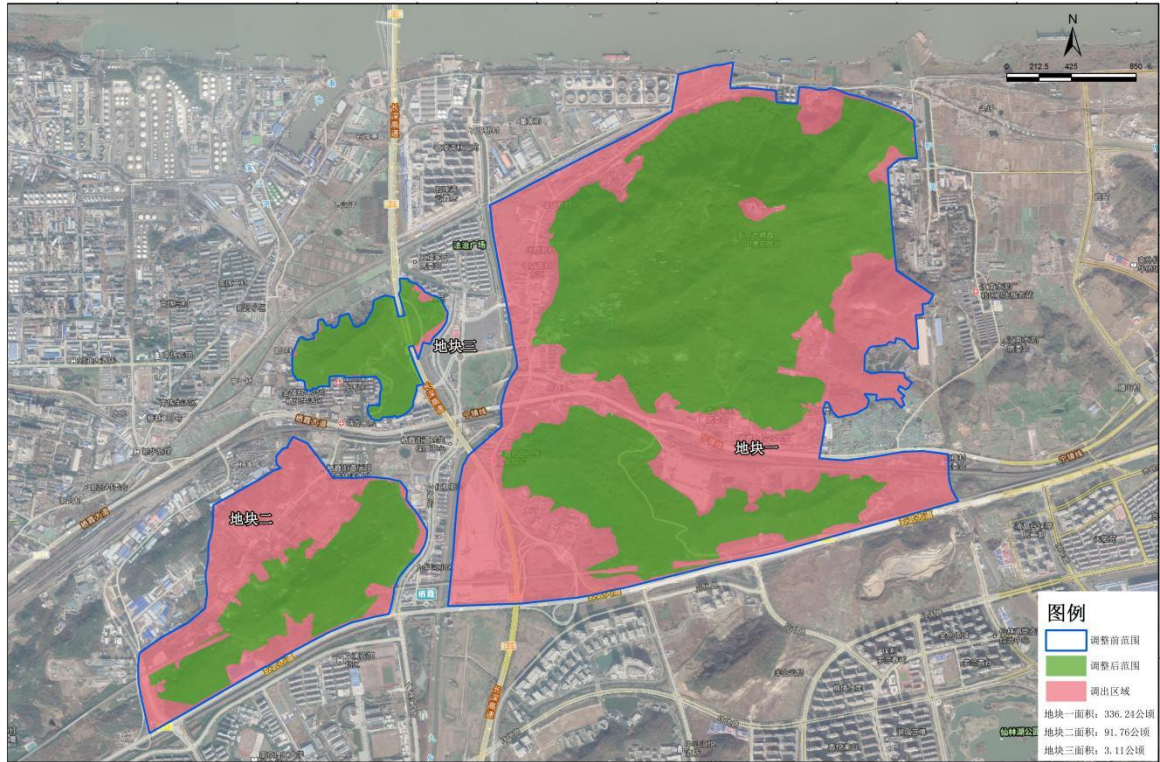


南京栖霞山国家森林公园公示材料

一、国家级森林公园所在地理位置

南京栖霞山国家森林公园位于南京市栖霞区中部，位于长江江畔。南京栖霞山国家森林公园设有栖霞山景区、何家山景区、南象山景区和北象山景区 4 个独立片区，地理坐标为东经 $118^{\circ}55'20'' \sim 118^{\circ}58'34''$ ，北纬 $32^{\circ}07'54'' \sim 32^{\circ}10'01''$ 。公园东西长 5.12 千米，南北宽 3.88 千米。

二、国家级森林公园调整方案示意图



三、国家级森林公园调整后范围拐点坐标

序号	经度	纬度	序号	经度	纬度
1	118°56'18.13"	32°08'40.99"	60	118°56'03.08"	32°09'11.47"
2	118°56'24.85"	32°08'35.54"	61	118°56'04.06"	32°09'14.29"
3	118°56'27.92"	32°08'29.02"	62	118°56'08.94"	32°09'15.53"
4	118°56'26.32"	32°08'23.84"	63	118°56'12.79"	32°09'13.64"
5	118°56'16.97"	32°08'18.92"	64	118°56'19.83"	32°09'19.91"
6	118°56'15.89"	32°08'14.43"	65	118°56'26.27"	32°09'23.56"
7	118°56'00.68"	32°08'10.57"	66	118°58'04.27"	32°09'56.44"
8	118°56'00.86"	32°08'12.79"	67	118°58'21.71"	32°09'59.65"
9	118°55'58.36"	32°08'10.76"	68	118°58'33.48"	32°09'52.81"
10	118°55'53.78"	32°08'12.92"	69	118°58'34.02"	32°09'47.83"
11	118°55'53.05"	32°08'07.97"	70	118°58'27.21"	32°09'49.63"
12	118°55'50.00"	32°08'06.56"	71	118°58'24.08"	32°09'45.44"
13	118°55'38.95"	32°08'01.62"	72	118°58'25.09"	32°09'42.55"
14	118°55'23.20"	32°07'56.73"	73	118°58'27.02"	32°09'38.15"
15	118°55'30.47"	32°08'04.06"	74	118°58'25.58"	32°09'26.19"
16	118°55'39.16"	32°08'08.84"	75	118°58'17.78"	32°09'23.92"
17	118°55'37.30"	32°08'11.24"	76	118°58'12.70"	32°09'10.31"
18	118°55'42.77"	32°08'15.54"	77	118°58'03.67"	32°09'08.97"
19	118°55'46.01"	32°08'21.80"	78	118°57'58.17"	32°09'02.36"
20	118°55'53.79"	32°08'23.30"	79	118°58'08.35"	32°09'00.77"
21	118°55'56.35"	32°08'26.60"	80	118°58'07.37"	32°08'54.85"
22	118°56'01.29"	32°08'25.31"	81	118°58'04.29"	32°08'54.89"
23	118°56'11.18"	32°08'37.33"	82	118°58'06.19"	32°08'53.99"
24	118°57'16.28"	32°08'54.18"	83	118°58'04.53"	32°08'52.65"
25	118°57'30.47"	32°08'38.75"	84	118°57'55.82"	32°08'50.79"
26	118°57'45.15"	32°08'37.67"	85	118°57'50.56"	32°08'52.54"
27	118°57'50.57"	32°08'34.45"	86	118°57'43.55"	32°08'54.72"
28	118°57'52.85"	32°08'33.39"	87	118°57'41.30"	32°08'53.58"
29	118°57'57.63"	32°08'36.68"	88	118°57'39.07"	32°08'54.13"
30	118°58'06.68"	32°08'37.15"	89	118°57'33.07"	32°08'54.76"

序号	经度	纬度	序号	经度	纬度
31	118°58'10.59"	32°08'40.41"	90	118°57'33.13"	32°08'56.60"
32	118°58'17.63"	32°08'39.37"	91	118°57'31.17"	32°08'58.03"
33	118°58'24.52"	32°08'37.58"	92	118°57'29.15"	32°08'57.82"
34	118°58'16.65"	32°08'29.85"	93	118°57'25.98"	32°08'54.00"
35	118°57'54.38"	32°08'27.73"	94	118°57'20.92"	32°08'59.83"
36	118°57'39.97"	32°08'22.55"	95	118°57'14.02"	32°09'00.99"
37	118°57'43.19"	32°08'22.47"	96	118°57'11.20"	32°09'02.72"
38	118°57'20.69"	32°08'19.95"	97	118°57'04.08"	32°09'05.36"
39	118°57'14.63"	32°08'20.24"	98	118°56'58.87"	32°09'13.27"
40	118°57'14.40"	32°08'20.93"	99	118°57'02.85"	32°09'32.31"
41	118°57'17.65"	32°08'25.50"	100	118°57'01.99"	32°09'33.72"
42	118°57'04.36"	32°08'34.62"	101	118°57'03.48"	32°09'36.76"
43	118°56'56.80"	32°08'37.00"	102	118°57'03.86"	32°09'37.25"
44	118°56'49.00"	32°08'39.50"	103	118°57'03.95"	32°09'37.53"
45	118°56'53.64"	32°08'49.26"	104	118°57'03.99"	32°09'37.64"
46	118°56'58.44"	32°08'52.54"	105	118°57'09.12"	32°09'41.42"
47	118°56'27.28"	32°09'21.64"	106	118°57'13.44"	32°09'43.32"
48	118°56'34.73"	32°09'18.38"	107	118°57'18.86"	32°09'40.07"
49	118°56'29.20"	32°09'10.68"	108	118°57'19.35"	32°09'39.11"
50	118°56'27.62"	32°08'59.08"	109	118°57'20.86"	32°09'39.09"
51	118°56'18.64"	32°08'53.59"	110	118°57'23.20"	32°09'43.83"
52	118°56'18.32"	32°08'56.76"	111	118°57'22.96"	32°09'48.15"
53	118°56'19.51"	32°09'00.61"	112	118°57'25.26"	32°09'50.61"
54	118°56'10.21"	32°09'03.14"	113	118°57'35.36"	32°09'56.84"
55	118°56'03.42"	32°09'00.90"	114	118°57'44.33"	32°09'59.64"
56	118°56'00.65"	32°09'00.43"	115	118°57'53.15"	32°10'00.89"
57	118°55'56.97"	32°09'06.10"	116	118°57'52.42"	32°09'34.88"
58	118°55'58.32"	32°09'07.79"	117	118°57'55.07"	32°09'38.72"
59	118°56'00.31"	32°09'11.06"			