

内蒙古商都察汗淖尔国家湿地公园

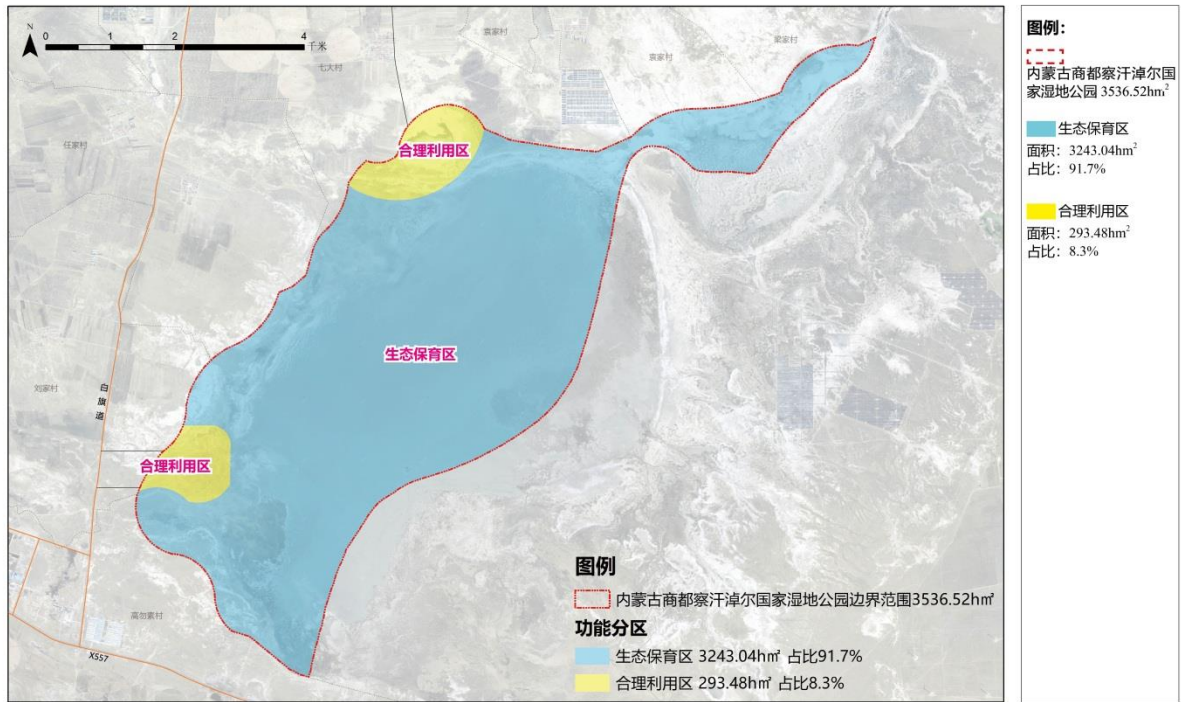
一、内蒙古商都察汗淖尔国家湿地公园所在地理位置

商都察汗淖尔国家湿地公园位于内蒙古高原南缘冀蒙两省交界处，是我国北方尤其是华北重要的生态安全屏障，是内蒙古高原草原湖泊湿地群的重要组成部分。

商都察汗淖尔国家湿地公园规划范围与河北尚义察汗淖尔国家湿地公园接壤，东北至十八顷镇梁家村，西南至小海子镇高勿素村，以省界、现状小道等为界。地理坐标范围为东经 $113^{\circ}49'56''$ ~ $113^{\circ}58'9''$ ，北纬 $41^{\circ}24'41''$ ~ $41^{\circ}30'2''$ 之间。

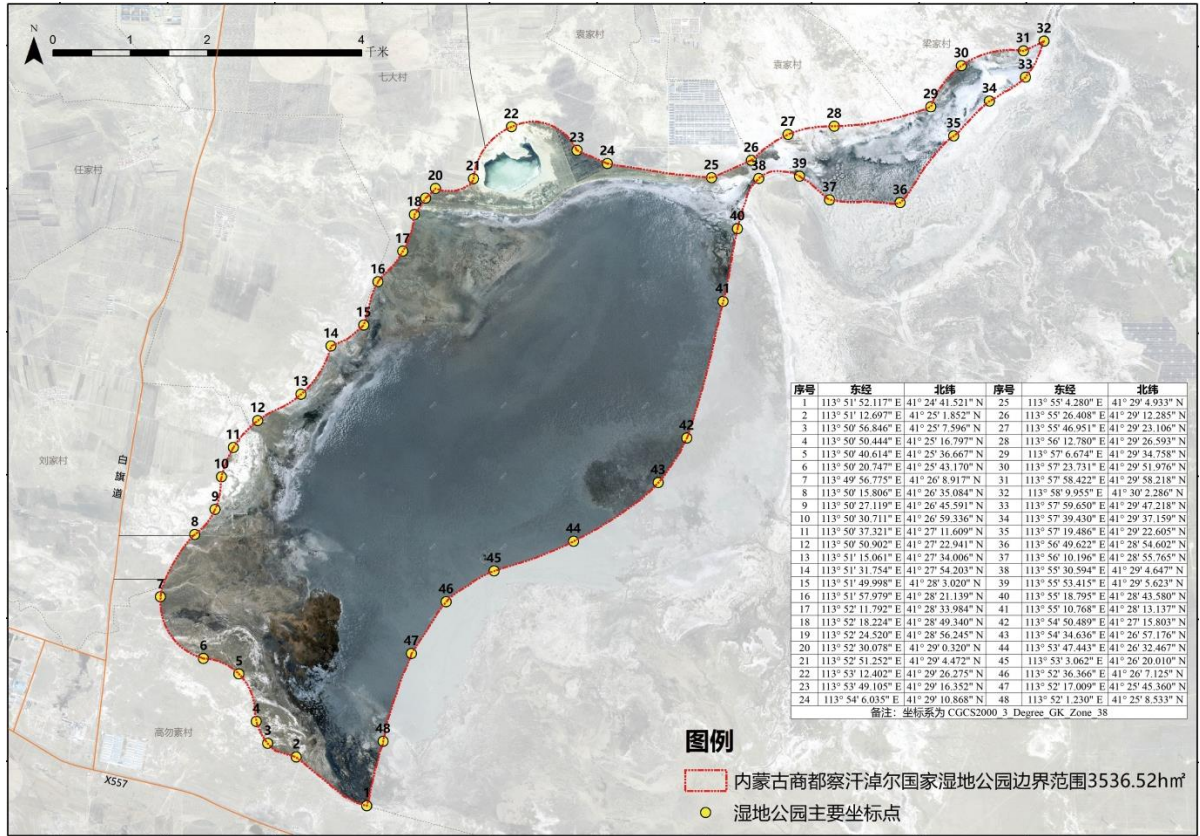
二、内蒙古商都察汗淖尔国家湿地公园示意图

内蒙古商都察汗淖尔国家湿地公园功能分区图



三、内蒙古商都察汗淖尔国家湿地公园主要拐点坐标

序号	东经	北纬	序号	东经	北纬
1	113°51'52.117"	41°24'41.521"	25	113°55'4.280"	41°29'4.933"
2	113°51'12.697"	41°25'1.852"	26	113°55'26.408"	41°29'12.285"
3	113°50'56.846"	41°25'7.596"	27	113°55'46.951"	41°29'23.106"
4	113°50'50.444"	41°25'16.797"	28	113°56'12.780"	41°29'26.593"
5	113°50'40.614"	41°25'36.667"	29	113°57'6.674"	41°29'34.758"
6	113°50'20.747"	41°25'43.170"	30	113°57'23.731"	41°29'51.976"
7	113°49'56.775"	41°26'8.917"	31	113°57'58.422"	41°29'58.218"
8	113°50'15.806"	41°26'35.084"	32	113°58'9.955"	41°30'2.286"
9	113°50'27.119"	41°26'45.591"	33	113°57'59.650"	41°29'47.218"
10	113°50'30.711"	41°26'59.336"	34	113°57'39.430"	41°29'37.159"
11	113°50'37.321"	41°27'11.609"	35	113°57'19.486"	41°29'22.605"
12	113°50'50.902"	41°27'22.941"	36	113°56'49.622"	41°28'54.602"
13	113°51'15.061"	41°27'34.006"	37	113°56'10.196"	41°28'55.765"
14	113°51'31.754"	41°27'54.203"	38	113°55'30.594"	41°29'4.647"
15	113°51'49.998"	41°28'3.020"	39	113°55'53.415"	41°29'5.623"
16	113°51'57.979"	41°28'21.139"	40	113°55'18.795"	41°28'43.580"
17	113°52'11.792"	41°28'33.984"	41	113°55'10.768"	41°28'13.137"
18	113°52'18.224"	41°28'49.340"	42	113°54'50.489"	41°27'15.803"
19	113°52'24.520"	41°28'56.245"	43	113°54'34.636"	41°26'57.176"
20	113°52'30.078"	41°29'0.320"	44	113°53'47.443"	41°26'32.467"
21	113°52'51.252"	41°29'4.472"	45	113°53'3.062"	41°26'20.010"
22	113°53'12.402"	41°29'26.275"	46	113°52'36.366"	41°26'7.125"
23	113°53'49.105"	41°29'16.352"	47	113°52'17.009"	41°25'45.360"
24	113°54'6.035"	41°29'10.868"	48	113°52'1.230"	41°25'8.533"



序号	东经	北纬	序号	东经	北纬
1	113° 51' 52.117" E	41° 24' 41.521" N	25	113° 53' 4.280" E	41° 29' 4.933" N
2	113° 51' 12.697" E	41° 25' 1.852" N	26	113° 53' 26.408" E	41° 29' 12.285" N
3	113° 50' 56.846" E	41° 25' 7.596" N	27	113° 55' 46.951" E	41° 29' 23.106" N
4	113° 50' 50.444" E	41° 25' 16.797" N	28	113° 56' 12.780" E	41° 29' 26.593" N
5	113° 50' 40.614" E	41° 25' 36.667" N	29	113° 57' 6.674" E	41° 29' 34.758" N
6	113° 50' 20.747" E	41° 25' 43.170" N	30	113° 57' 23.731" E	41° 29' 51.976" N
7	113° 49' 56.775" E	41° 26' 8.917" N	31	113° 57' 58.422" E	41° 29' 58.218" N
8	113° 50' 15.806" E	41° 26' 35.084" N	32	113° 58' 9.955" E	41° 30' 2.286" N
9	113° 50' 27.119" E	41° 26' 45.591" N	33	113° 57' 59.650" E	41° 29' 47.218" N
10	113° 50' 30.711" E	41° 26' 59.336" N	34	113° 57' 39.430" E	41° 29' 37.159" N
11	113° 50' 37.321" E	41° 27' 11.609" N	35	113° 57' 19.486" E	41° 29' 22.668" N
12	113° 50' 50.902" E	41° 27' 22.941" N	36	113° 56' 49.622" E	41° 28' 54.602" N
13	113° 51' 15.061" E	41° 27' 34.006" N	37	113° 56' 10.196" E	41° 28' 55.765" N
14	113° 51' 31.754" E	41° 27' 54.203" N	38	113° 55' 30.594" E	41° 29' 4.647" N
15	113° 51' 49.998" E	41° 28' 3.020" N	39	113° 55' 53.415" E	41° 29' 5.623" N
16	113° 51' 57.979" E	41° 28' 21.139" N	40	113° 55' 18.795" E	41° 28' 43.580" N
17	113° 52' 11.792" E	41° 28' 33.984" N	41	113° 55' 10.768" E	41° 28' 11.137" N
18	113° 52' 18.224" E	41° 28' 49.340" N	42	113° 54' 50.489" E	41° 27' 15.803" N
19	113° 52' 24.520" E	41° 28' 56.245" N	43	113° 54' 34.636" E	41° 26' 57.176" N
20	113° 52' 30.078" E	41° 29' 0.320" N	44	113° 53' 47.443" E	41° 26' 32.467" N
21	113° 52' 31.252" E	41° 29' 4.472" N	45	113° 53' 3.062" E	41° 26' 20.010" N
22	113° 53' 12.402" E	41° 29' 26.275" N	46	113° 52' 36.366" E	41° 26' 7.125" N
23	113° 53' 49.105" E	41° 29' 16.352" N	47	113° 52' 17.009" E	41° 25' 45.360" N
24	113° 54' 6.035" E	41° 29' 10.868" N	48	113° 52' 1.230" E	41° 25' 8.533" N

备注: 坐标系为 CGCS2000 3 Degree GK Zone 38

图例

- 内蒙古商都察汗淖尔国家湿地公园边界范围3536.52hm²
- 湿地公园主要坐标点